



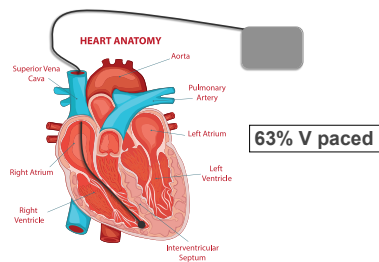
# Pacemaker optimization

Pacing percentages

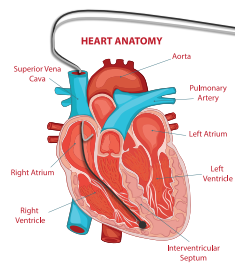
## Pacing percentages



- An example of data collected by pacemaker
- What percentage of the time a particular chamber has been paced



Single-chamber pacemaker (ventricular)



24% ASVS
18% APVS
11% ASVP
47% APVP

**Dual-chamber pacemaker**

---

---

---

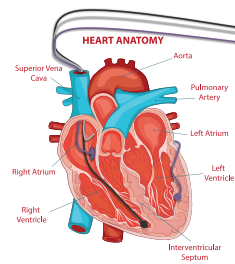
---

---

---

---

---



99% BiV Pace
--------------

**Biventricular pacemaker**

---

---

---

---

---

---

---

---



- Does the pacemaker need tweaking?
- Reviewing the impact of programming adjustments
- Ensuring high percentage of biventricular pacing

**Fine tuning**

---

---

---

---

---

---

---

---

### It does not tell us...



...how dependent a patient is  
on their pacemaker to **survive**.

---

---

---

---

---

---



Meet Bob

---

---

---

---

---

---

### Takeaway message



100% paced **does not**  
necessarily mean a patient  
is pacemaker dependent!

---

---

---

---

---

---